

GenoProof®

Your all-in-one solution for kinship and parentage

including creation of pedigrees
and chimerism analysis



Labs analyzing parentage relationships demand process reliability and high quality of results. On that account, GenoProof comprises the entire workaround from raw data analysis (supporting 6-dye-kits), biostatistic calculations for basic and complex cases to reporting.

ALL-IN-ONE

- > User-friendly operation for easy-to-learn handling, efficient work and satisfying use of the software
- > Easy data exchange with other software such as GeneScan®, Genotyper®, GeneMapper® ID or other qualitytype products
- > Data Management for storing and filtering all information
- > Expandable Reference Data including continuously updated markers, test kits and a population database with more than 1000 allele frequency tables
- > Flexible licence model enables to use GenoProof exactly according to you requirements – in small and big labs – GenoProof grows with your success
- > Extensive services such as support, training, customized configurations as well as consulting

PARENTAGE INVESTIGATION

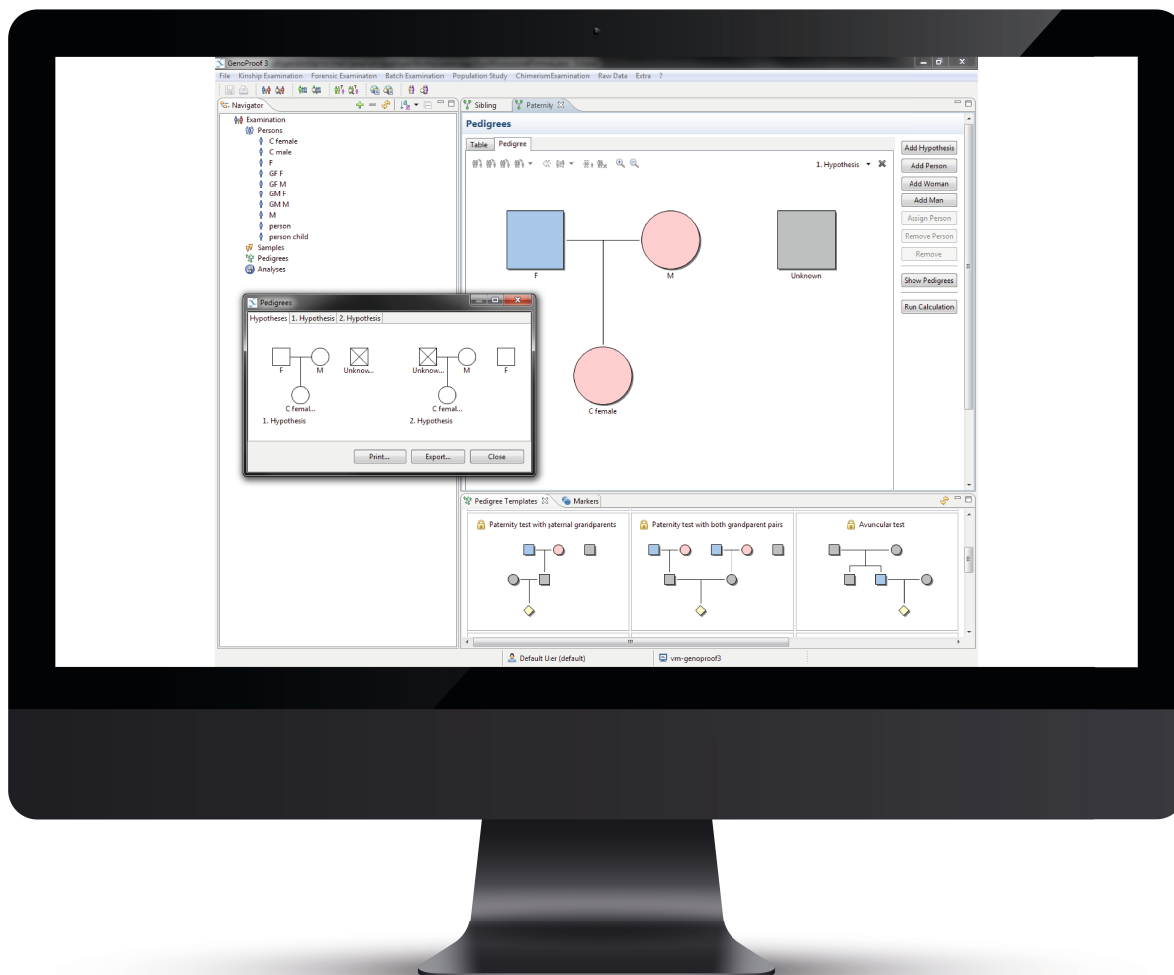
GenoProof performs parentage analyses to determine assumed family relations taking subpopulations, silent alleles and different mutation models into account. It calculates all relevant parameters for classic trio and duo constellations as well as complex deficiency cases or incest cases.

EASYREAD TECHNOLOGY

GenoProof provides size and allele calling algorithms for high-throughput raw data analysis of fsa and hid files. This genotyping tool supports the automated analysis of multiplex PCR kits for autosomal and gonosomal STR markers. The raw data analysis is based on new size and allele calling algorithms such as heuristic optimization, automatic peak detection via polynomial functions and smoothing. The software supports all usual data formats such as fsa and hid as well as the analysis with 6-dye-kits.

Make more out of your routine.
With GenoProof®!

Test for free and without any obligations: www.genoproof.com



EASY TO USE

GenoProof offers a user-friendly interface that allows intuitive operation of the software. This makes it possible to create graphic family trees quickly and easily.

FAMILY TREES (PEDIGREES)

GenoProof enables you to easily create arbitrarily complex pedigrees using graphic templates to define your kinship hypotheses.

REPORTING

GenoProof enables you to generate reports and forms. Doing so, you can use ready-made report templates or determine your own report templates concerning content and layout. The reports can be outputted as pdf- or rtf (compatible with MS Word)-document.

CHIMERISM ANALYSIS AND FORENSIC EXAMINATIONS

Chimerism analysis includes the calculation of the fraction of cells with donor's genotype and standard deviations. The software provides also a forensic section for calculation of probability of identity.



Education and training

We are happy to support you! A targeted training programme enables a quick introduction to kinship and parentage analysis with GenoProof. Get in touch with us!



Our quality management system is certified according to ISO 9001:2015.

Status of information: 05/2022
Subject to changes and errors

Read more at
www.qualitytype.de



**THE WORLD OF SAMPLES
REVEALED WITH A CLICK.**